

High-Resolution Transesophageal Imaging

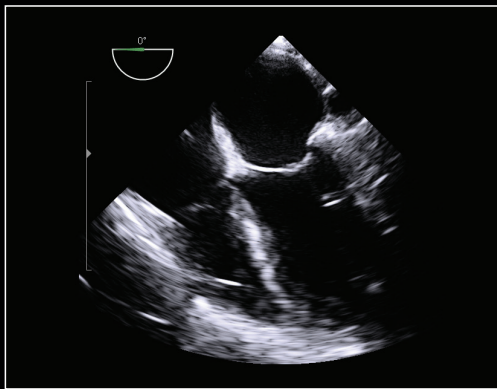
- The transesophageal echocardiography (TEE) transducer T7P2m* is ideal for ultrasound examinations of all areas of the heart (including chambers, valves, and the aorta) without interference from the ribs or lungs.
- Useful in monitoring cardiac surgery procedures.
- 4-way flexible mechanism provides precise positioning for optimal cardiac imaging.
- Ergonomic control handle allows for one-handed operation.



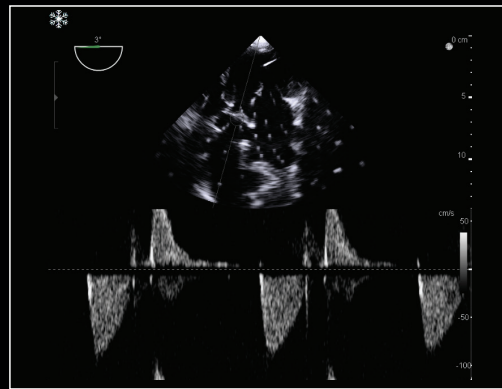
Real Clinical Impact with High-Resolution Imaging

T7P2m TEE TRANSDUCER

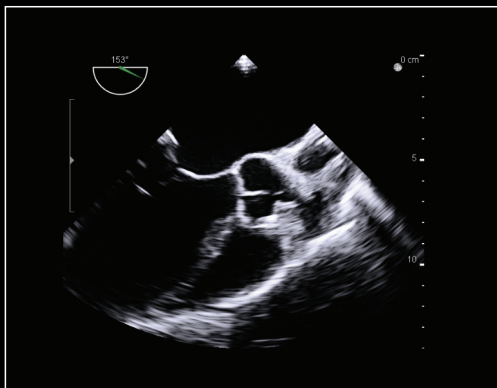
- Small tip for improved patient comfort
- Multiplane imaging capability
- 180° motorized array rotation
- Flexible, anti-buckling neck section
- 7-2 MHz frequency range
- 20 cm scan depth
- Phased array technology



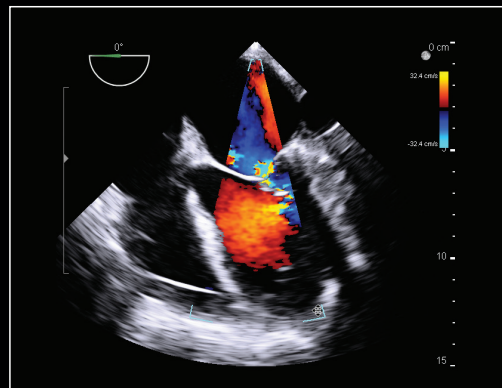
Mid-esophageal four-chamber view
T7P2m transducer



CW Doppler seen from transgastric
long axis view during electrosurgery
T7P2m transducer



Mid-esophageal long axis view
T7P2m transducer



Mid-esophageal 4C color flow view
with mitral regurgitation
T7P2m transducer

BK Medical
8 Centennial Drive
Peabody, MA 01960
USA
T +1 978 326 1300
bkmedical.com

USA
Sales & Service
BK Medical
8 Centennial Drive
Peabody, MA 01960
USA
T +1 978 326 1300
F +1 978 326 1399
bkmedical.com

Europe and Rest of World
Sales, Service & Design Center
BK Medical
Mileparken 34, 2730
Herlev, Denmark
T +45 4452 8100
F +45 4452 8199
bkmedical.com

bk 
medical